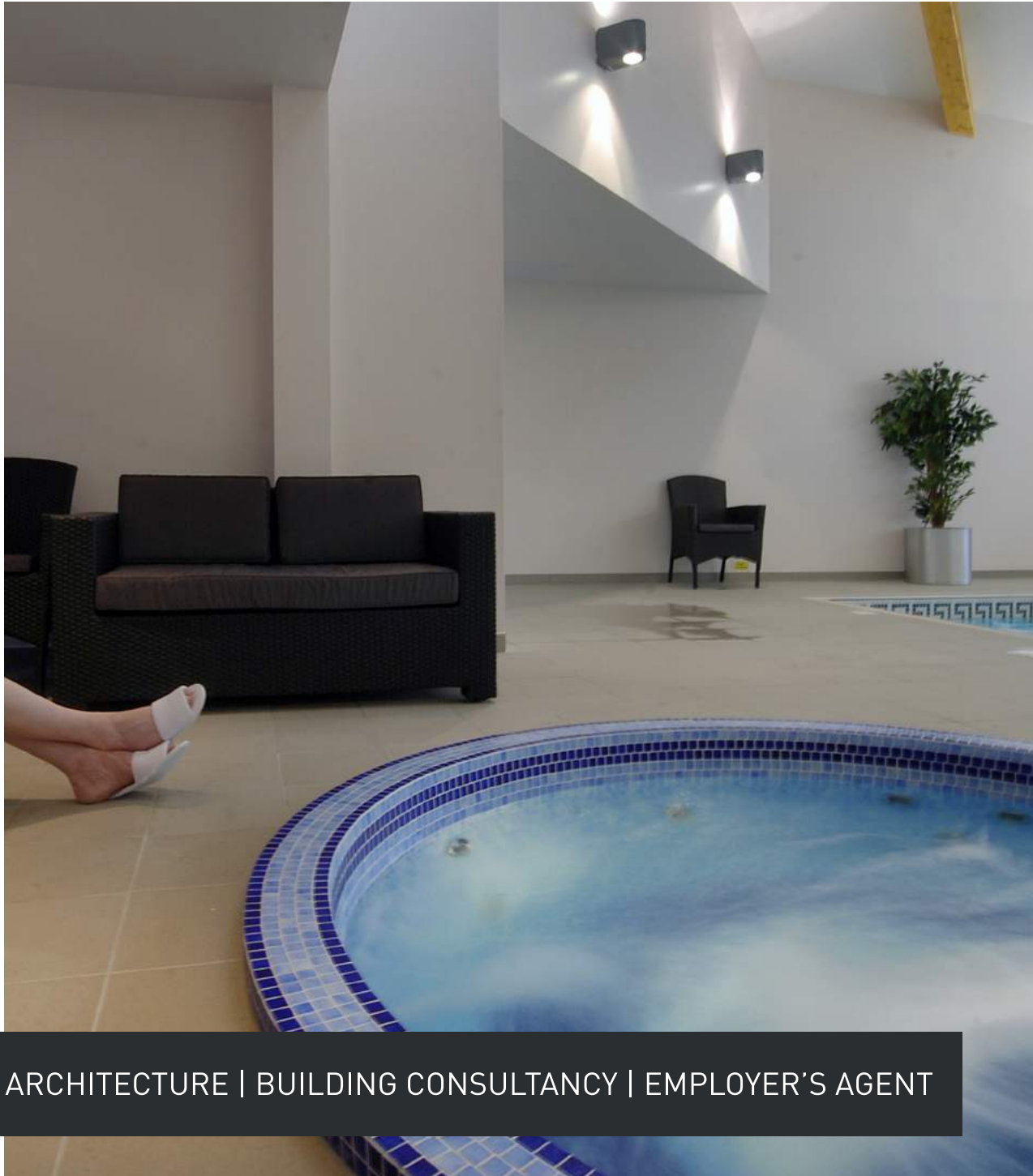




hunters



LATER LIVING



ARCHITECTURE | BUILDING CONSULTANCY | EMPLOYER'S AGENT

hunters

At Hunters we design our services around you

Award-winning design

As well as a number of design awards, we have received five gold awards from Stirling University's DSDC for dementia design, ultimately achieving the highest ever score.

Homes designed for people

That's why our senior living and care team guide clients through design and delivery of care homes - delicately responding to the aspirations and needs of residents, visitors and staff.

We adapt our skills to suit the project

Generating great planning permission results and enabling the right services, the right look, the right feel, the right financial model in the right place for our clients.

Structured delivery programmes

We are experts at resolving challenges (stopping them before they happen). We have clear delivery plans and focus on the job – providing an excellent service.

This brochure touches on some of those projects.

Team Leads

We have a dedicated team just for this sector. They know about care, they care about the result and, they work with our clients to design care homes of substance. That's why we continually achieve gold in dementia design.



James Wallace
Director



Jason Alderson
Associate Director



Ian Johnson
Associate Director



Gregory Deakin
Associate Director



Eddie Chen
Associate Director



Christos Stypas
Associate



Michaela Jahn
Associate



Thomas Black
Associate



Gabor Honfi
Associate

Areas of Work

Our healthcare team possesses exceptional experience in designing for later living and have become leaders within the fields of dementia and affordable design, as well as private developments and care villages.

Our design aims to make later living more enjoyable by incorporating additional facilities, both shared and private spaces and technical detailing, so staff and support have access to organised, easy to use environments.

We believe in the social value of later living and that the last years should be enjoyed to the full.

Residential Care Homes

- > Residential Care
- > Nursing Care
- > Specialist Dementia Care
- > Dementia Resource Centre's
- > Learning Disability Communities

Retirement Communities

- > Extra Care
- > Retirement Villages
- > Housing with Care
- > Assisted Living
- > Age Restricted Independent Living

Retirement Housing

- > Sheltered Housing
- > Retirement Flats



JUST COMPLETED

It's been a busy year or so for our care team, designing a range of senior living environments including dementia centres, extra care, over 55's private to 100% affordable. Leading the way in care design, our innovative and resident focused team makes a real difference to our clients, all supported by the highest ever mark in the world being awarded by the University of Stirling Dementia Services Design Centre.

Park View Court, Hillingdon

Park View Court is part of Hillingdon's strategy to provide high-quality Senior Living that's affordable within the Borough. There are 57 one-bed and 3 two-bed, self-contained accessible apartments with expansive balconies - all 100% affordable.

The design promotes independent living with a clear separation between communal and private residential areas with a view to provide a 'Home for Life'. We made sure dementia care principles were incorporated in the scheme from the outset with consideration to be given to lighting, colour schemes and tonal contrast, casting of shadows, audible signals and tactile information to help residents with dementia.

The centre provides 24/7 care to residents and houses treatment rooms with assisted bathing, alongside a communal hub that provides residents with support, services and activities. These services include a dining room, a café / restaurant and a hairdresser, as well as laundry facilities.

The external design and floor plan correspond with the landscape and orientation. The design process involved resident, staff and public consultations to help inform the design.

London Borough of Hillingdon



↑ Many apartments have views over the surrounding area



Gardens have a mixture of hard and soft landscaping ↑



↑ Winter gardens or balconies for every apartment

Parking is underground ↓



10

Edwardstow Court, Gloucestershire

Sitting within an area of outstanding natural beauty, consideration had to be given to the Cotswolds design code and sensitivity towards nature and the surrounding local buildings.

The proposals were developed in the context of our outline approval achieved for a care community masterplan which enabled us to reflect local character and keep mature trees.

Generous spaces both inside and out were key, these provide leisure and community spaces for future residents. We designed the 48 bedroom specialist dementia care homes by adopting a village street style creating variety in heights and fenestration design on a homely scale. The new home links 'houses' made with local materials with strong sustainable features.

Outside we have suggested mixing meadow grasses in a natural environment with mown paths highlighting its rural appeal.

The Orders of St John Care Trust
Brackley Investments



↑ Strict local guidelines informed the design



↑ Staggered roof terraces



Café style communal kitchen ↓





Cornell Court, Saffron Walden

The newly completed Hunters design comprises of 73 flats for the over-55's, all affordable or shared ownership - ideal for local residents who need help to continue living independently.

The Extra Care scheme is a collection of brand new purpose-built spacious and modern apartments, complemented by a range of community facilities. 33 apartments are shared ownership and 40 for affordable rent. There are shared areas with seating and every day services, including a café, hair salon and health support.

A contemporary design with a strong emphasis on functionality and integration with the public realm. Building mass and design is proportionate and offers a sense of activity and purpose to the local built environment.

High quality materials were chosen with a long-term view of the building life, with solar PVs on the roof.

L&Q Group

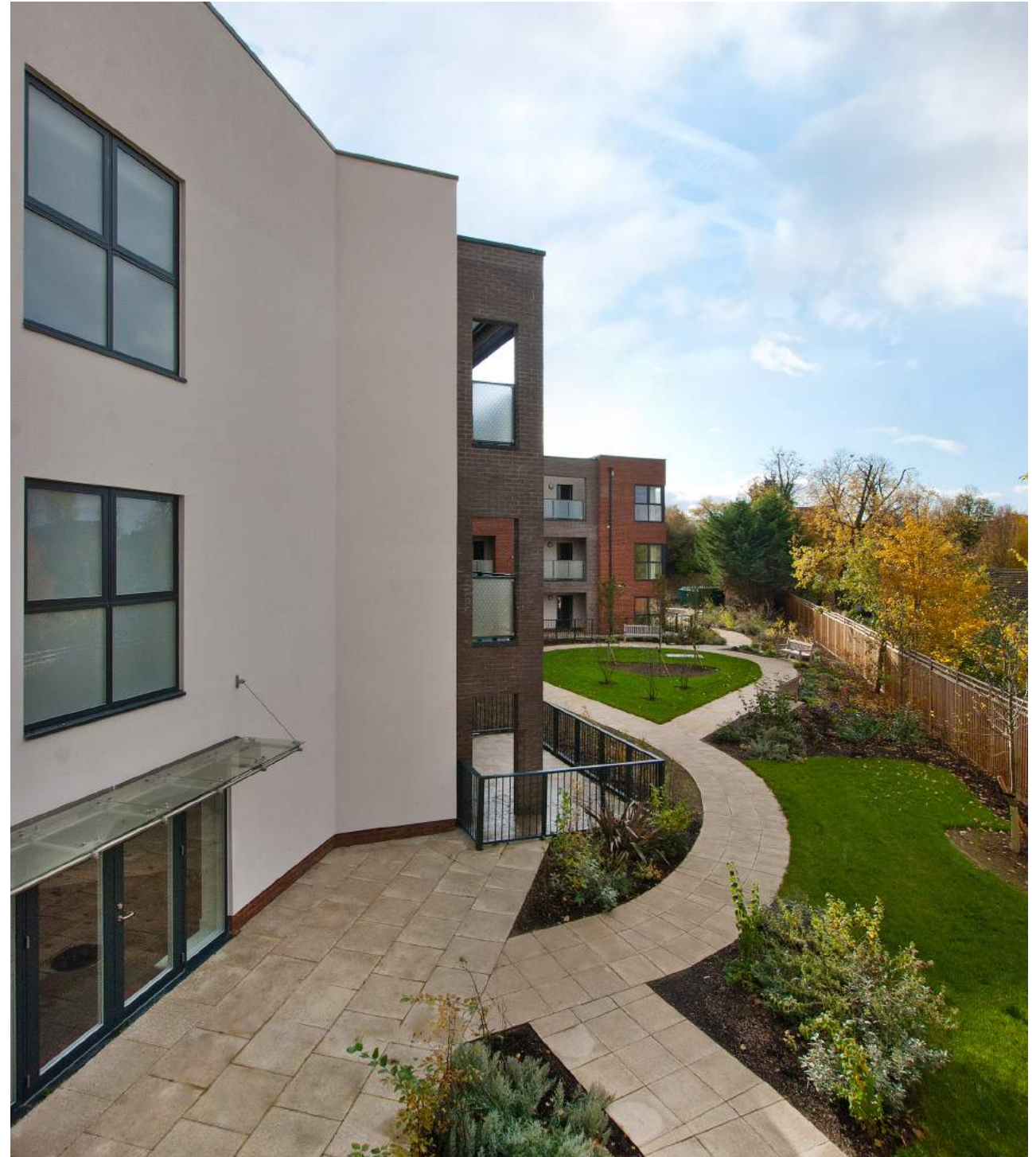


↑ Planting softens the landscape



↑ The design broke down façades into new elements

All homes have large balconies or terraces ↓



↑ Interesting building patterns were key

Moreton Close, Barnet

As part of Barnet Council's review of its older peoples housing provision, existing sheltered buildings at Moreton Close were demolished and have been replaced with a new extra care residential development to provide 53 self-contained one and two bedroom apartments.

There are a range of associated and dementia-friendly facilities to support adults with additional care needs to live independently, including communal laundry, lounge and dining, with central catering to provide at least one hot meal each day if required, assisted bathroom, hairdressing and 24-hour care, as needed.

Large balconies, bright interiors, shared and private gardens make well-being a priority, the scheme feels like a high-quality, private development.

Barnet Homes



↑ Mid-century interiors



↑ A mix of homes

Bright, contemporary and homely ↓



↑ Large balconies and windows bring the outside in

Hawkesbury Place, Gloucestershire

Exclusively designed for the over 70's, Hawkesbury Place boasts extensive communal living services, all set within the picturesque town of Stow-on-the-Wold, an area of outstanding natural beauty.

As masterplan architects, we originally achieved outline planning consent for both the assisted living and residential care with Brackley Investment on Edwardstow Court. McCarthy & Stone appointed us to achieve detailed planning consent and deliver the project with them.

Great attention to detail of type of stone, heights of homes and the aspect / layout of each dwelling was key in responding to the local look and feel. The quintessential Cotswolds designs were welcomed by the planning committee.

There are 20 one bedroom apartments and 24 two bedrooms apartments, all designed to make life a little easier with details including raised height electrical sockets and an electric window in the kitchen. Residents are also provided with extensive communal living services, including a restaurant, wellness suite, function room, owners lounge and guest suite.

Hawkesbury Place is part of a masterplan for more care and senior housing within the Cotswolds.

McCarthy & Stone



↑ Each home has its own personality





↑ Traditional Cotswolds design re-interpreted

Mix of sizes for couples or singles ↓



↑ Detail and material type was key



INNOVATION IN AGE

Later life is about living, which is why Hunters are experts in dementia care. Scoring the highest ever Stirling University percentage for dementia design, we believe in the best for residents, staff and visitors.

Grassy Meadow Court, Hillingdon

An eccentric mix of colour brightens the personal ‘winter gardens’ which contrast with the softer outside landscapes. The new homes have been built for the council and are 100% affordable rent. A new dementia resource centre with a secure courtyard are on hand. The development makes a significant contribution to improving the provision of high quality, affordable accommodation in the area for local elderly people.

Designed as an Extra Care model with the view to provide a ‘Home for Life’, Grassy Meadow Court has achieved the University of Stirling DSDC Gold standard for dementia design.

London Borough of Hillingdon



↑ Views to each flat are enhanced



Excalibur Estate, Lewisham

As part of the 371 planning approved new homes, this scheme incorporated a block of age restricted senior housing, incorporating specialist design features, including winter gardens, communal resident spaces and SELHP disability standard dwellings. Part of a major regeneration project to replace post-war temporary pre-fabricated bungalows, this scheme incorporates homes for the over-55s. These are located opposite the new Church of England church and community building for added security and support.

London & Quadrant



↑ Senior housing embedded in mixed tenures

Goodson Lodge, Trowbridge

This Hunters designed 64-bed development is split across two floors and designed to cater for people with dementia. It incorporates several key design features to promote reminiscence as therapy. This includes comfortable and homely household living areas in addition to a central communal area which includes a cinema, shop, hair salon, secured communal gardens and a café.

The Orders of St John Care Trust

SCORED 98% IN DEMENTIA CARE FROM STIRLING UNIVERSITY



↑ Extended balconies overseeing the landscaped garden



↑ Shared community spaces

Gardens will mature delightfully ↓





CALM, COOL AND COLLECTED

Part of what makes a care home successful is how it feels. The space, the light, the natural pleasures. Even in the city, a view, a garden can make the difference in wellbeing.

Fremantle Court, Stoke Mandeville

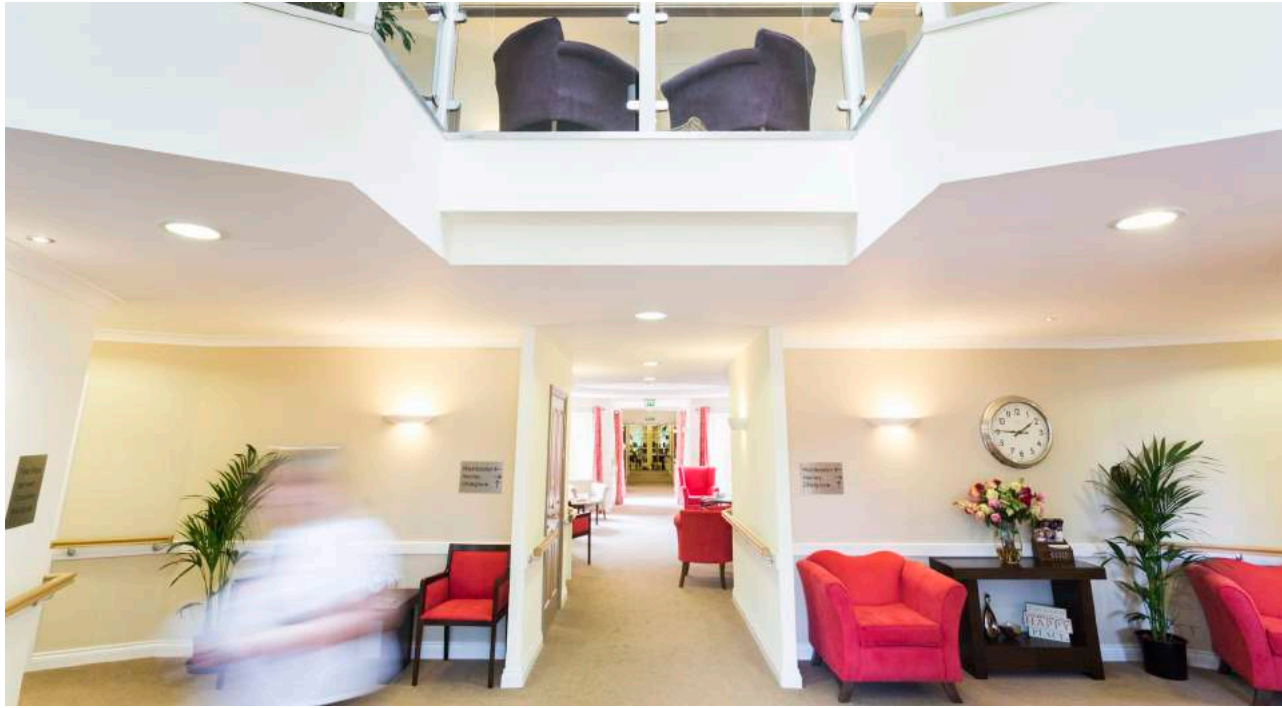
Our work at Fremantle Court in Stoke Mandeville has been awarded with the Gold Standard from Stirling University on Dementia Design. This accreditation is a highly-respected independent audit that assesses environments used by people with dementia. We met a series of criteria in design and operations specifically for dementia sufferers.

This 90-bed home has one purpose in mind – to provide a happy, comfortable, desirable and safe place to live. Internally the home is six smaller, homely wings catering for a range of needs – frailty and general difficulty managing everyday life, people who are living with dementia and people who require nursing care. Each wing has its own sitting room, dining room and assisted bathroom, as well as 15 luxurious personal rooms providing a mix of intimate and communal spaces.

The Fremantle Trust

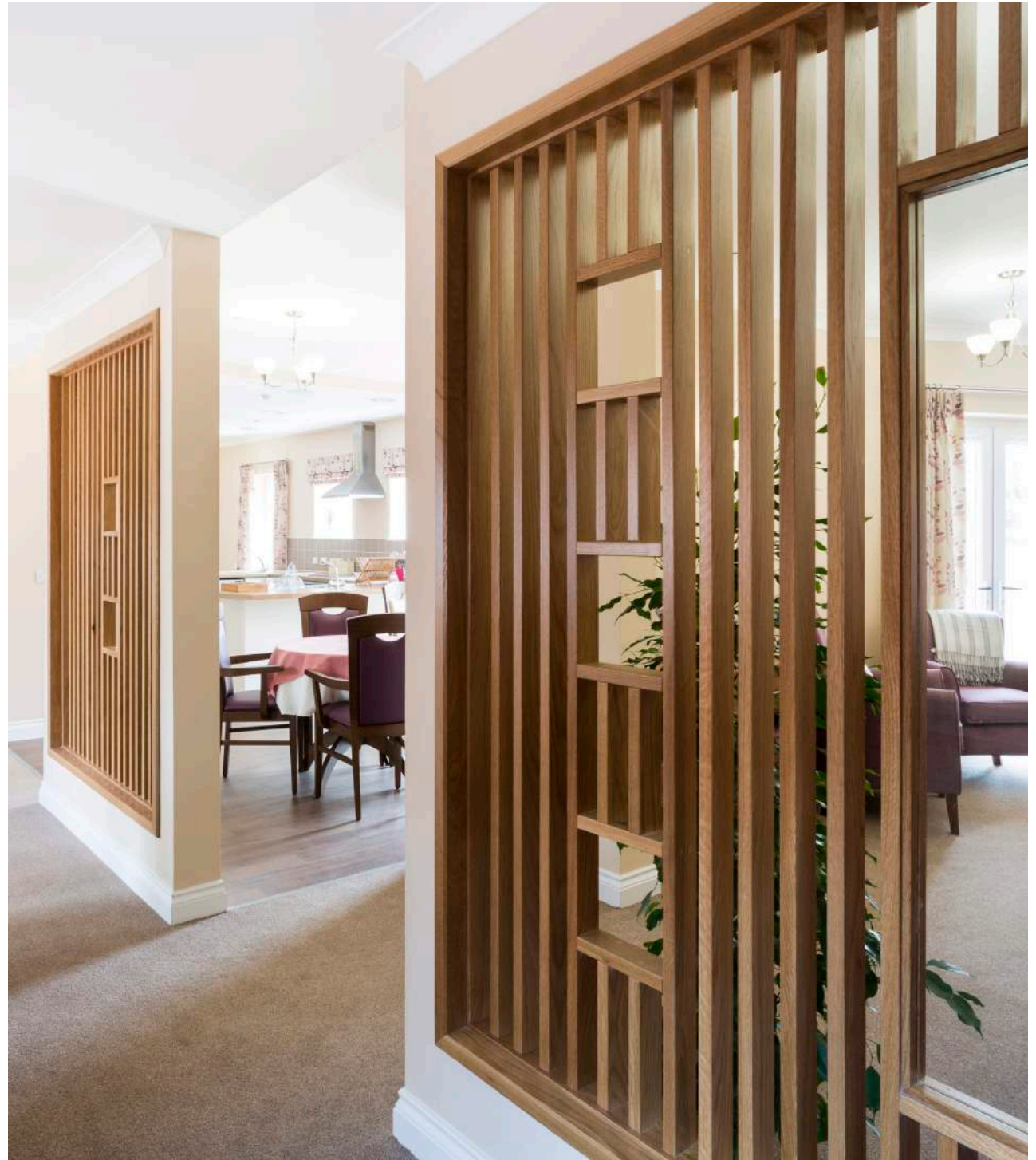


↑ Natural wildlife garden is combined with private spaces



↑ Breakout spaces

Each wing has it's own community ↓



↑ Comfortable living

Dickens Yard, Ealing

A unique attitude to senior homes – active living in an urban centre – Dickens Yard is a contemporary fusion of rented homes (including for the elderly), luxury apartments and leisure facilities. Hunters directed the delivery process for the over-55 homes at this exceptionally high quality urban site.

The priority is for elderly tenants who currently live in large council homes and want to downsize, so their houses can be refurbished and released to families. Nearly 700 new apartments are being built above shops with views over bustling streets or quiet garden terraces.

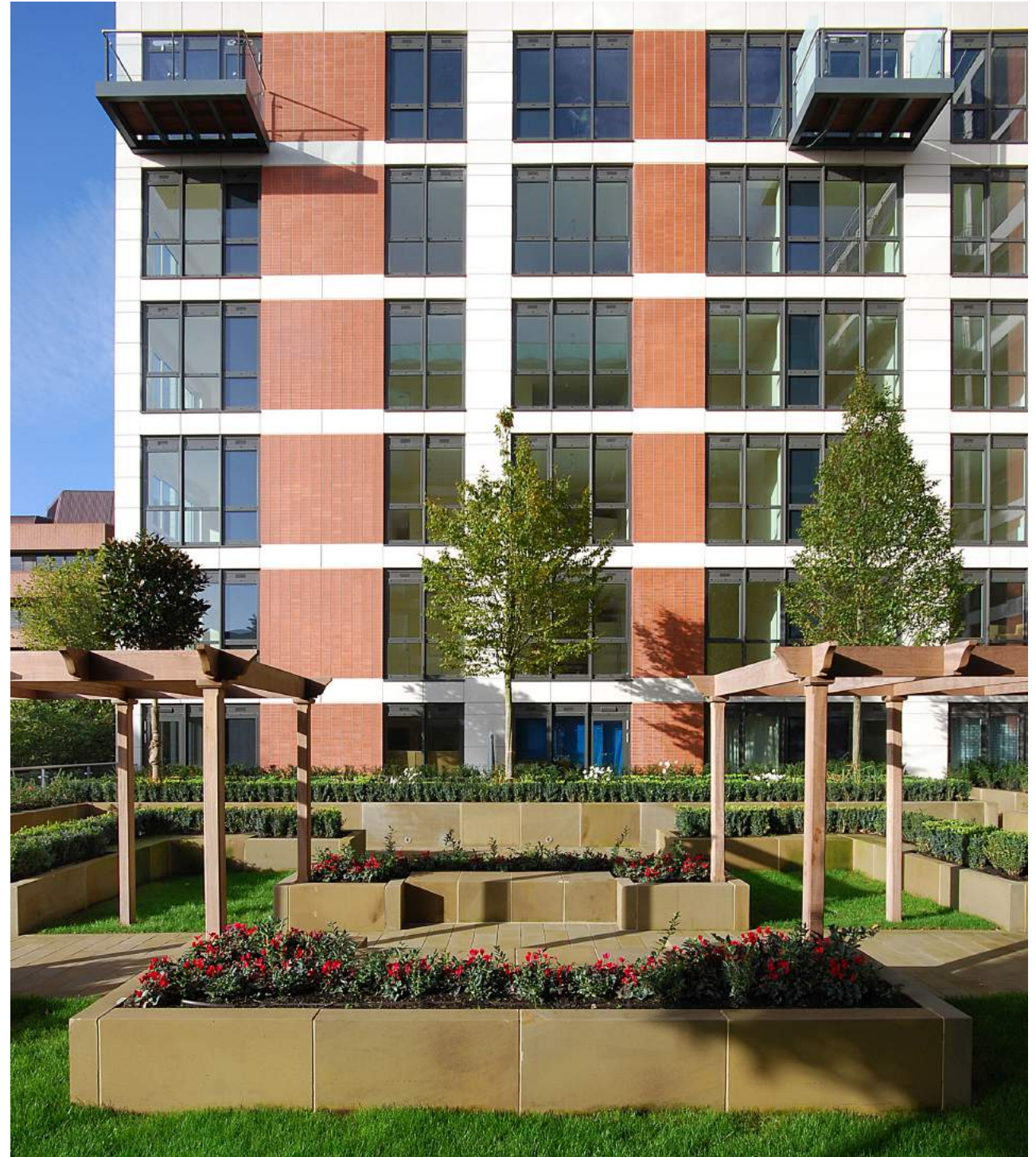
Catalyst





↑ Shared gardens

Tight urban grain ↓



↑ Flats have superb views

Otterbourne Hill, Winchester

Otterbourne provides a range of care needs and accommodation for senior persons near Chandlers Ford north of Southampton. Otterbourne Hill supports individuals and couples facing the challenges of living day-to-day in later life, offering reassurance, support and flexibility. The design enables obstacle free living for better independent lives.

The home enables easy access to a wide range of facilities including the Otterbourne Club, a community hub with a bowling green and space for activities. The home has magnificent winter gardens a private upstairs bar with roof terrace.

The complex houses provide three services in one; residential care, design in accordance with the University of Stirling DSDC dementia toolkit, a specialist Dementia Resource Hub and assisted living apartments, allowing couples to continue living together whilst receiving support.

The care home has on-site nursing care and respite support and sleeps up to 64 residents. There is a shared kitchen for binding the in-house community, making a pleasant experience.

BrendonCare



↑ The home is multi-layered to maximise outdoor space



↑ Glazed entrances bring in light to interiors

Soft interior design to create home from home ↓

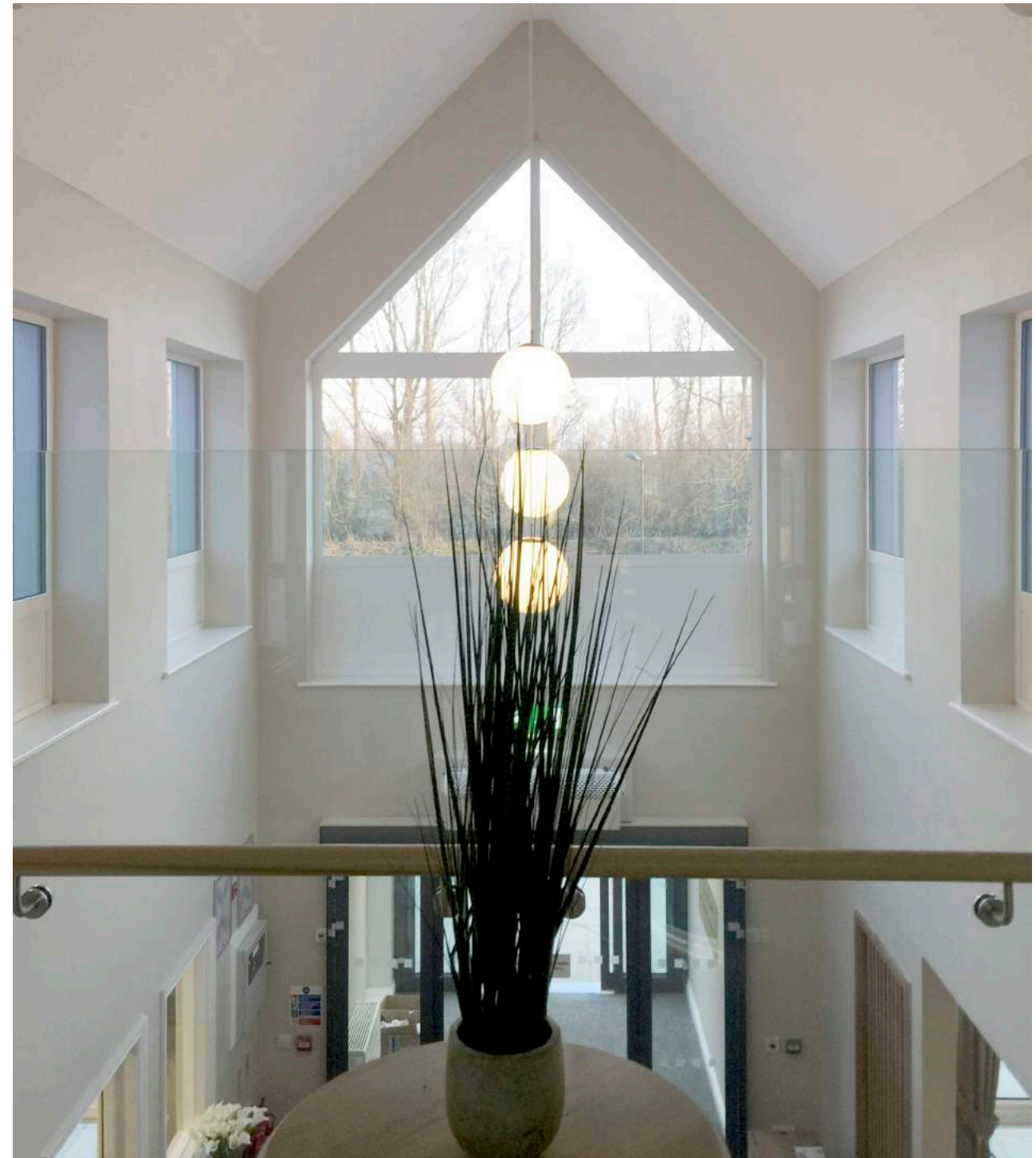


The Lakes, South Cerney

With 64 residential places, The Lakes is a modern, comfortable environment. It was designed specifically to enhance the quality of life of older people living with dementia. Every resident has access to comfortable and homely household living areas and the waterside position promotes an atmosphere of calmness and tranquillity. In-house 'shops' include a hairdressing salon and coffee shop. There is easy access to a safe outdoor terrace and entertainment room.

Brackley Investments

GOLD AWARD FROM STIRLING UNIVERSITY



↑ Light floods into hallways





MAKING LIFE EXCITING!

Senior Care shouldn't mean boredom. That's where retirement villages work, a trip to the cinema, a glass of wine with friends or chilling out in areas which feel 'designed'. It is time for enjoyment.

Girton Green, Cambridge

Girton Green provides the ultimate in luxury, outstanding facilities and a lively setting for the over-55s combined with on-site support. Extraordinary independent living services make this a very popular place. The focus was on leisure facilities, complete with a 'relaxation centre', spa, gym, boule court, hair stylists and cafe/restaurant gives freedom and fun to the residents. There are around 75 private ownership flats and flats to rent. Hunters played an executive role in detailing the design and completion of the homes.

Abbeyfield



↑ Homes wrap around gardens



Swimming pool, hot tub and sauna [↑](#)



[↑](#) Funky living!

[Great eating](#) [↓](#)

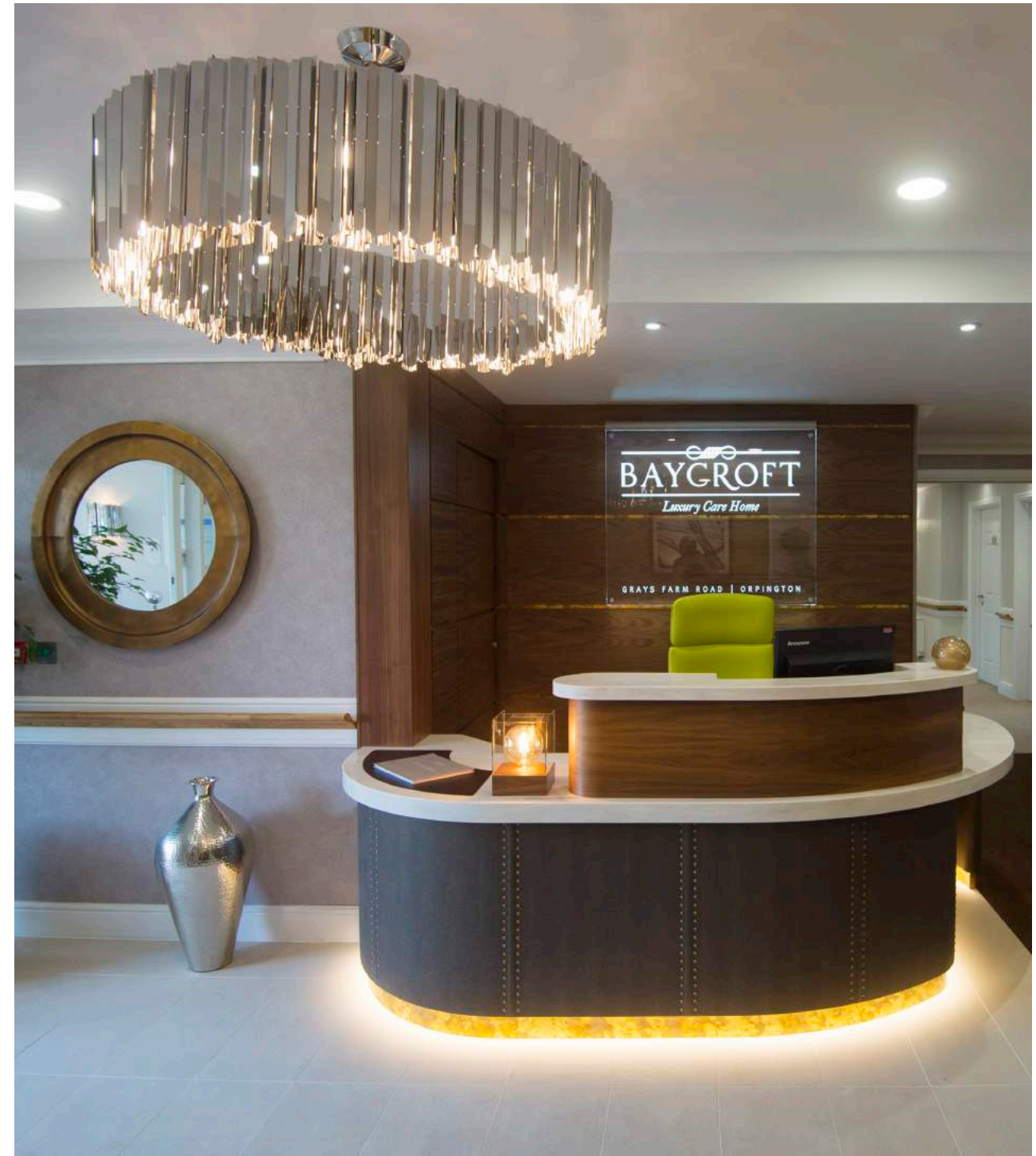




Baycroft, Orpington

Acting for the operator Baycroft, a sub brand of One Housing Group, our Building Consultants are working as Tenant Representatives providing Project Management services on the just completed Great Baddow home. Residents at the luxury Chelmsford home can go to the cinema, library, spa, hairdressers and gym – all without venturing outdoors. On top of a stylish interior, 24-hour care is provided for the 64 bedroom home and it is a sister project to Grays Farm Road care home in Orpington which we recently completed.

One Housing Group



↑ Hotel inspired reception



Dining experience ↑



↑ Family room

Outside space ↓

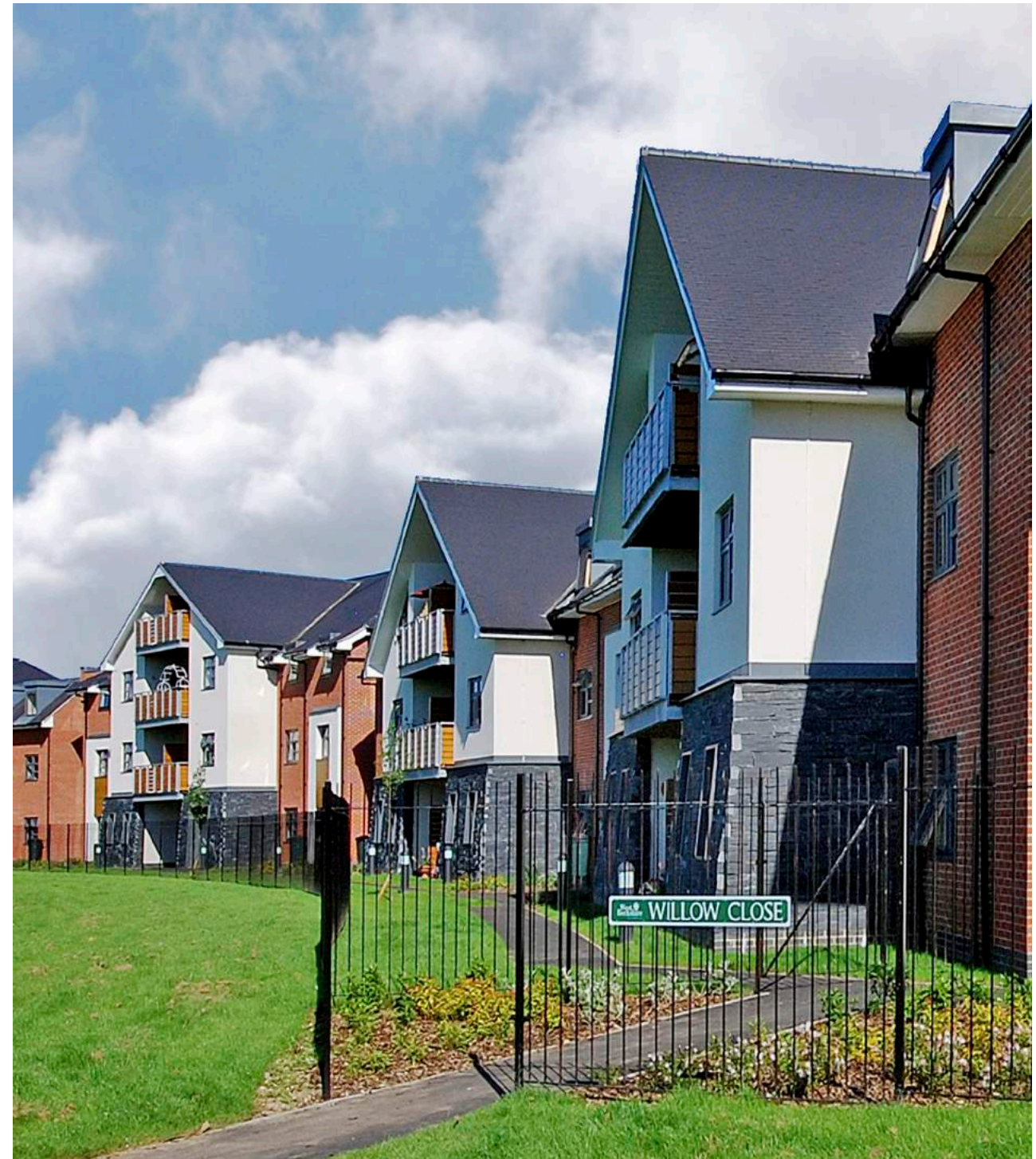


72

Willow Close, Newbury

Demonstrating that high quality spaces and finishes can be part of an affordable housing scheme, residents at Willow Close experience comfortable homes for the over 55's. Designed to cap a park, the façades reinterpret the English Crescent linking public gardens with homes. Acting as a gateway into Newbury, over 60 apartments and bungalows have private gardens or large balconies many with views. The quirky design of long pitched roofs house mezzanine floors and are complimented by the sculptural heads by artist Joseph Hillier.

Sovereign Housing Group



↑ A sweeping design





FITTING-IN

Local plans, local vernacular, we adjust to suit the area, that's why we have such a high rate of planning success.

Ridgmount Apartments, Wimbledon

On the cusp of Wimbledon Village in a conservation area, Ridgmount Apartments is a luxury retirement home catering for the local market. Twenty-five flats and health spa connect with the sensory and secluded gardens. Residents can easily walk into the town where there are excellent road and transport access.

Central & Cecil



↑ Every apartment has a balcony



Redwood House, Hungerford

The location enables stunning vistas for residents at Redwood House which combines age restricted housing and extra care. The curved layout highlights the views and enabled the preservation of trees on the site. Age restricted apartments have winter gardens and large roof terraces.

The extra care is designed around a central atrium providing natural light deep into the building. The front of the main building is at a lower level than the back, which is incorporated into the design so bedrooms and balconies have the best views and there is easy access to the back terrace. A new bat barn for long eared bats sits at the back of the site.

Sovereign Housing Association



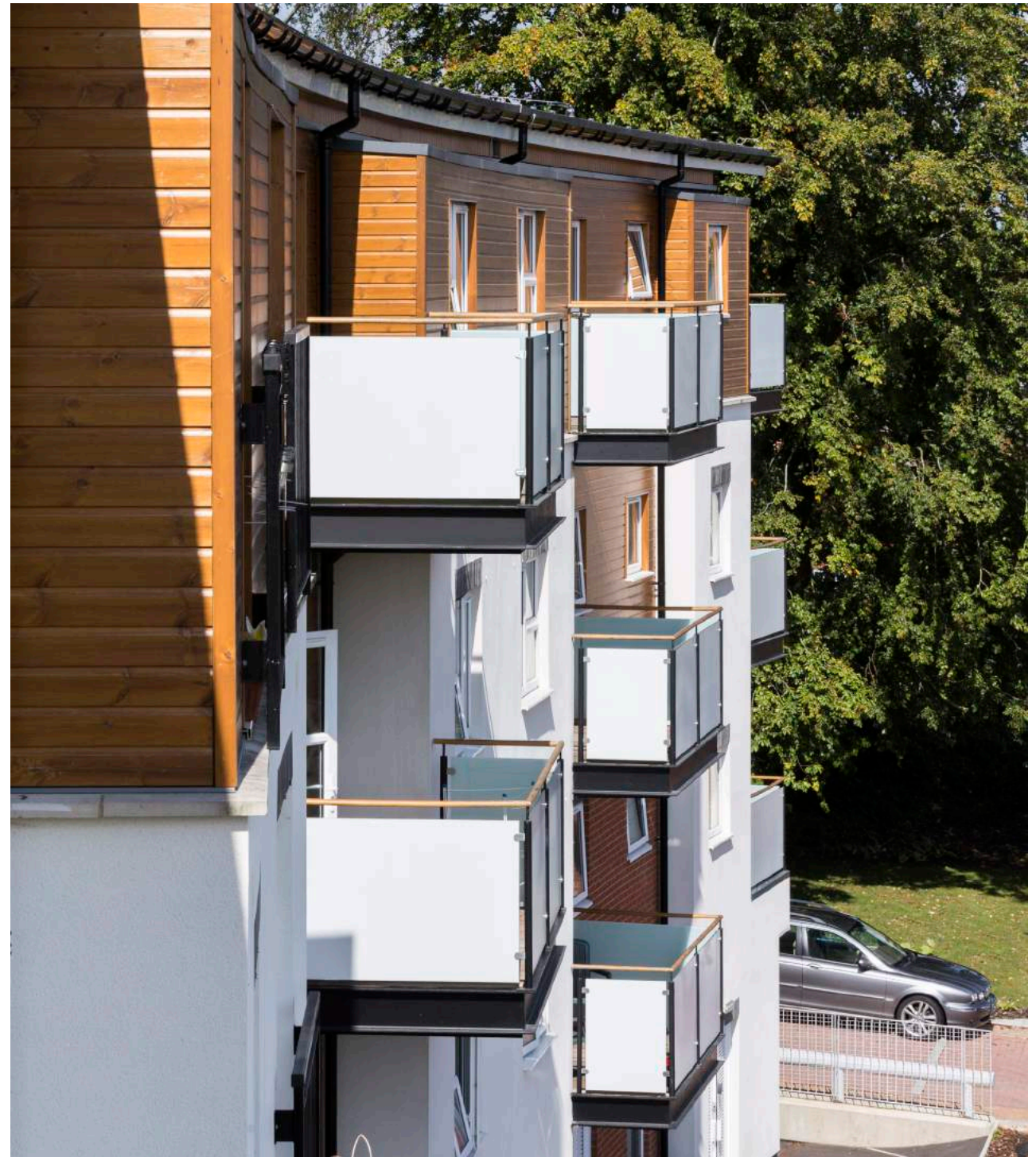
↑ Views overlooking an area of outstanding natural beauty





↑ Mature trees were retained ↓

A mix of outdoor spaces ↓



↑ Balconies provide private outside space ↓

Watson Place, Chipping Norton

The proposed brownfield site development offers an opportunity to create high-quality accommodation for the elderly consisting of 59 assisted living apartments with eight bungalows and six terraced houses for retirement living. Objectives for the scheme included the provision of a highly sustainable development with a sense of place and character, attractively designed with high-quality materials.

McCarthy & Stone



↑ A roof terrace overlooks the gardens



Extra care within a 3-storey building ↑



↑ A range of different sized accommodation

Low level housing around the gardens ↓



↓



Millbrooke Lodge, Gloucestershire

Part of the Gloucestershire County Council care strategy, Millbrook lodge is a popular, 80 bed care home. There are four distinct care suites, allowing groups of residents to live in comfort with shared lounges, dining areas and assisted bathing on hand. The shape maximises the views of Cooper's Hill as well as allowing the creation of interesting, secure and sheltered gardens.

The Orders of St John Care Trust
Bedfordshire Pilgrims Housing Association





↑ Bee loving planted beds

Abundance of fresh air ↓



↑ Wheelchair friendly garden

Awards

Dementia Services Development Centre (DSDC), University of Stirling 2020
Grassy Meadow, Winner (Gold)

LABC Building Excellence Awards 2019
Grassy Meadow, Finalist

Health Care Design Awards with Pinders 2019
Grassy Meadow, Finalist

Dementia Services Development Centre (DSDC), University of Stirling 2018
Goodson Lodge, Winner (Gold) (Highest Score Ever)

Dementia Services Development Centre (DSDC), University of Stirling 2018
The Lakes Care Homes, Winner (Gold)

Housing Innovation Awards 2016
Fremantle Court, Finalist (Most Innovative Supported/Sheltered Housing Scheme)

Dementia Services Development Centre (DSDC), University of Stirling 2015
Fremantle Court, Winner (Gold)

Building Better Healthcare Awards 2015
Fremantle Court, Winner (Best Dementia Care Development)

Clients

- | | |
|------------------------------|--|
| Abbeyfield | Royal Masonic Benevolent Institution |
| Advance Housing | Royal National Institute of Blind People |
| Anchor Hanover Group | Royal Star & Garter |
| Birchgrove | Signature Prime Property |
| Brackley Investments | Sirona Care & Health |
| Brendoncare | Sovereign Housing Group |
| Central & Cecil | StepCare |
| Gateway Housing Association | The Fremantle Trust |
| HMT Care | The London Clinic |
| Housing & Care 21 | The Orders of St. John Care Trust |
| Levanter Developments | Woking & Sam Beare Hospices |
| London Borough of Hillingdon | |
| L&Q | |
| McCarthy & Stone | |
| Octopus Healthcare | |
| ReVitalise | |

hunters

ARCHITECTURE | BUILDING CONSULTANCY | EMPLOYER'S AGENT

Space One Beadon Road
London W6 0EA

020 8237 8200
mail@hunters.co.uk



Hunterslondon



Hunters Architects & Building Consultants



Hunterslondon

hunters.co.uk